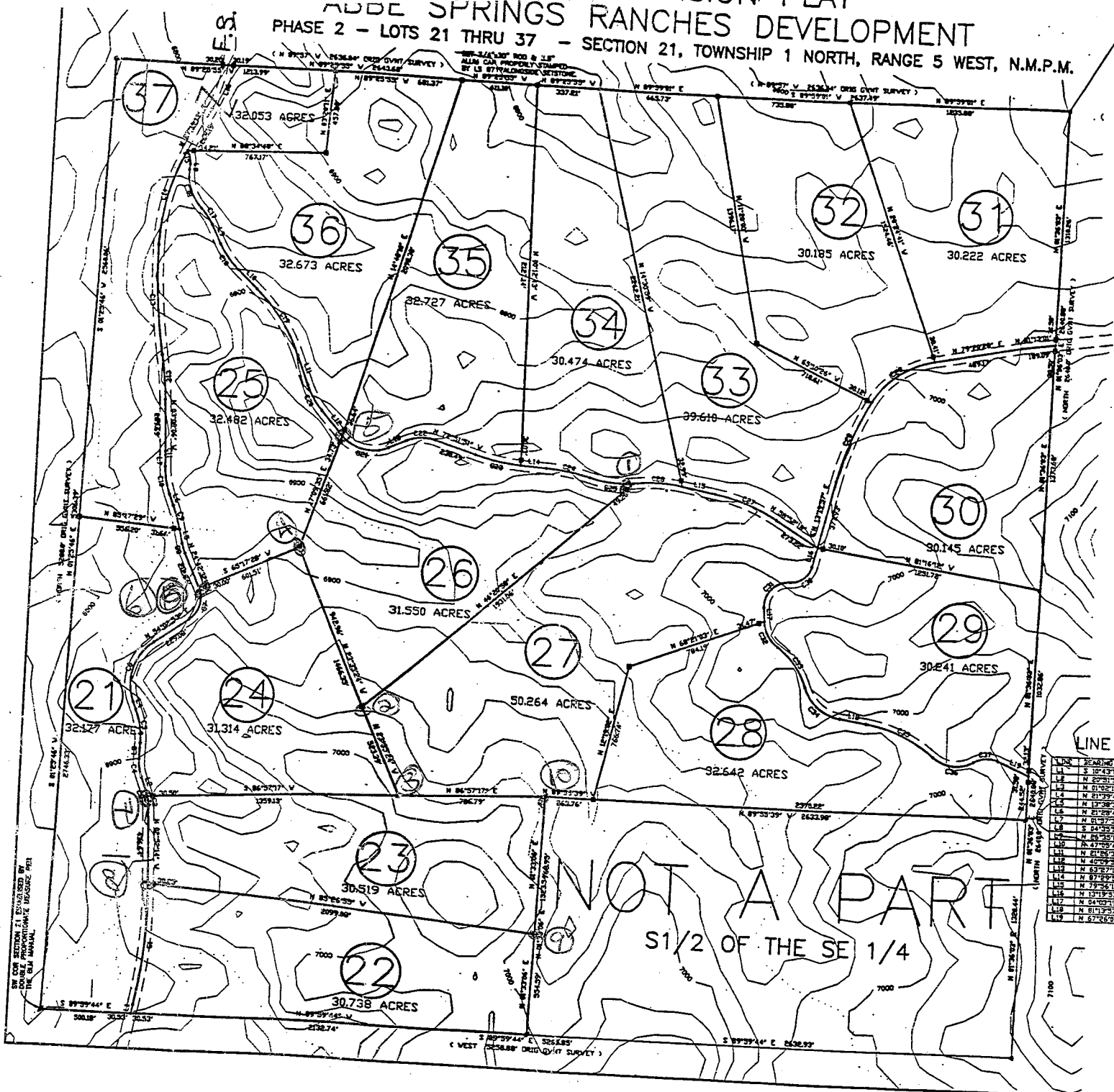


ADDE SPRINGS RANCHES DEVELOPMENT  
 PHASE 2 - LOTS 21 THRU 37 - SECTION 21, TOWNSHIP 1 NORTH, RANGE 5 WEST, N.M.P.M.



BY OUR SECTION 21 REGISTRATION BY DOUBLE PROPORTIONATE RECORDS PER THE MANUAL

LINE

101	N 28°30'00" E	123.88
102	S 10°43'11" W	123.88
103	N 20°31'00" E	123.88
104	N 81°02'15" W	123.88
105	N 81°02'15" W	123.88
106	N 81°02'15" W	123.88
107	N 81°02'15" W	123.88
108	S 24°25'55" E	123.88
109	N 65°28'00" E	123.88
110	N 47°02'00" E	123.88
111	N 61°28'00" E	123.88
112	N 42°00'00" E	123.88
113	N 81°02'15" W	123.88
114	N 79°25'10" E	123.88
115	N 15°19'00" E	123.88
116	N 64°00'00" E	123.88
117	N 81°02'15" W	123.88
118	N 81°02'15" W	123.88
119	N 62°00'00" E	123.88